

DUX stm goods smarter than most KEYBOARD TRACKPAD USB-C

A brilliantly designed keyboard case, with rugged bump protection, Apple Pencil 1, Pencil USB-C or Logitech Crayon storage, full-function trackpad, and USB-C connectivity to make your iPad experience even smarter

TRACKPAD GESTURES



Left Click: Press left side of keyboard until you feel a click to select.



Right Click: Press right side of keyboard until you feel a click to show quick action menu.



Click and hold: Press and hold with one finger.



Wake iPad: Click or tap the trackpad, or press any key.



Open the Dock: Use one finger to swipe the pointer past the bottom of the screen.



Go Home: Swipe up with three fingers.



View Slide Over: Use one finger to swipe the pointer past the right edge of the screen. To hide Slide Over, swipe right again.



Open Control Center: Use one finger to move the pointer to select the status icons at the top right, then click. Or, select the status icons at the top right, then swipe up with one finger.



Open Notification Center: Use one finger to move the pointer to select the status icons at the top left, then click. Or, use one finger to move the pointer past the top of the screen near the middle.



Open search from the Home Screen: Swipe down with two fingers.



Scroll Up or Down: Swipe two fingers up or down.



Scroll Left or Right: Swipe two fingers left or right.



Open App Switcher: Swipe down with three fingers.



Drag: Click and hold an item, then slide your finger across the trackpad to move it.



Switch Between Open Apps: Swipe left or right with three fingers.



Open Today View: When the Home Screen or the Lock Screen is visible, use two fingers to swipe right. To close Today View, click the left side of the trackpad.



Close Apps: In the App Switcher, move the onscreen pointer to the bottom right corner of the app, then click and hold the bottom right corner of the trackpad and drag the app up past the top of the screen, then release.

FEATURES

- 1 **iPAD HOME BUTTON**
Press in any open App
- 2 **SCREEN BRIGHTNESS**
Decrease
- 3 **SCREEN BRIGHTNESS**
Increase
- 4 **SPOTLIGHT SEARCH**
On iPad
- 5 **TYPE ON-SCREEN**
Keyboard
- 6 **DICTIONATION/SIRI**
*Siri must be set up on the iPad (in Settings/Siri & Search) for the Siri function key to work
- 7 **SCREENSHOT**
- 8 **MEDIA**
Previous track
- 9 **MEDIA**
Play/Pause
- 10 **MEDIA**
Next track
- 11 **SOUND**
Mute
- 12 **VOLUME**
Decrease
- 13 **VOLUME**
Increase
- 14 **LOCK**
iPad
- 15 **TRACKPAD**
Click, swipe, and scroll
- 16 **CONNECTION INDICATOR LIGHT**
Solid white - keyboard is connected to iPad
- 17 **CAPS LOCK INDICATOR LIGHT**
• Solid white - On
- 18 **USB-C PORT**
• Charge iPad
• Charge Apple Pencil (using adapter/cable, not included)
- 19 **AUX PORT**
3.5mm headphone plug
- 20 **SWITCH LANGUAGES**
If multiple language keyboards are set up in the iPad, use this key to switch between languages

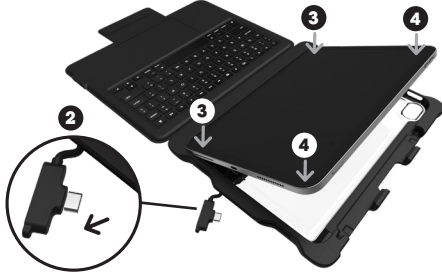


INSTRUCTIONS

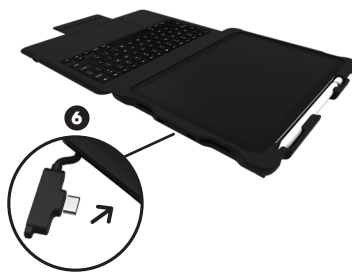
PREPARING FOR INSTALLATION

1. Remove the card insert from inside the case

INSERTING YOUR IPAD INTO THE CASE

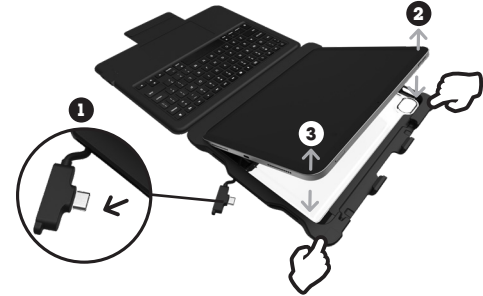


2. Unplug the USB-C connector from the bracket, so that the cable connector tip is not seated in the bracket and does not obstruct the iPad installation into the bracket. The cable will still be connected to the bracket at the other end.
3. Firmly press the left-hand side corners of the iPad into the left corners of the case.
4. Firmly press the right-hand side corners of the iPad into the right corners of the case.
5. Ensure all four corners are firmly in position, and the edge of the case fits smoothly around the front outer edge of the iPad.



6. Push the USB-C connector back into case opening so connector plugs into iPad's USB-C port. Once the cable is plugged into the iPad securely, the keyboard is now connected to the iPad, and the connection indicator light on the keyboard will be illuminated in white.

REMOVING YOUR IPAD FROM THE CASE



1. Unplug the USB-C connector from the iPad before removing the iPad from the case. If the cable is not unplugged before the iPad is removed, it could cause damage to the iPad or the cable when the iPad is removed from the case.
2. Release the top right corner of the iPad by firmly pushing the corner of the case back and away from the iPad.
3. Release the bottom right corner of the iPad by firmly pushing the corner of the case away from the iPad.
4. The iPad will be easy to remove once the USB-C connector is unplugged and the top and bottom right corners are released from the case.



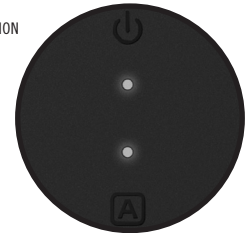
CHARGING THE IPAD

Insert one end of the USB-C charging cable (not included) into a power source (not included) and the other end into the USB-C port on the right side of the keyboard. The light will illuminate white while charging, and when the iPad is fully charged. iPad charging level is indicated on the top right corner of the iPad screen.

STATUS LIGHT INDICATORS

Your Dux Keyboard includes status lights that provide information about the power and connection:

FEATURE	COLOUR	PRESENTATION
Keyboard connected to iPad	White	Solid
CAPS lock	White	Solid



 WE BELIEVE IN REDUCING WASTE AND PRESERVING THE ENVIRONMENT. THIS PACKAGING IS RECYCLABLE. Check with your local recycling facility for best disposal.



SCAN QR CODE

To learn how we're making smarter choices for a sustainable future



CARTA RACCOLTA CARTA PAPER

This device complies with part 15 of the FCC Rules. Operation is subject to the following two conditions: (1) this device may not cause harmful interference, and (2) this device must accept any interference received, including interference that may cause undesired operation. Any changes or modifications not expressly approved by the party responsible for compliance could void the user's authority to operate the equipment.



If this equipment does cause harmful interference to radio or television reception, which can be determined by turning the equipment off and on, the user is encouraged to try to correct the interference by one or more of the following measures:

- Reorient or relocate the receiving antenna.
- Increase the separation between the equipment and receiver.
- Connect the equipment into an outlet on a circuit different from that to which the receiver is connected.
- Consult the dealer or an experienced radio/TV technician for help. The device has been evaluated to meet general RF exposure statement. The device can be used in portable exposure conditions without restriction.

Warning: Changes or modifications to this unit not expressly approved by the party responsible for compliance could void the user's authority to operate the equipment.

NOTE: This equipment has been tested and found to comply with the limits for a Class B digital device, pursuant to Part 15 of the FCC Rules. These limits are designed to provide reasonable protection against harmful interference in a residential installation. This equipment generates, uses and can radiate radio frequency energy and, if not installed and used in accordance with the instructions, may cause harmful interference to radio communications. However, there is no guarantee that interference will not occur in a particular installation.



SCAN QR CODE

TO LEARN HOW TO USE THE DUX KEYBOARD